

AC,BC Series F.R.L Unit



Ordering code

BC

Model

AC: Small size
BC: Middle size

3000

Port size

1500: G1/8"
2000: G1/4"
3000: G3/8"
4000: G1/2"

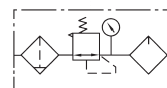
-

D

Drain type

Blank: Differential drain
D: Automatic drain

Symbol



Specifications

Model		AC1500	AC2000	BC2000	BC3000	BC4000
Fluid		Air				
Port size		G1/8"	G1/4"	G1/4"	G3/8"	G1/2"
Filtering grade		40 μ				
Pressure range		0.05 ~ 0.85MPa				
Max. pressure		0.95MPa				
Proof pressure		1.5MPa				
Operating temperature		5 ~ 60°C				
Drain bowl capacity		15 cc		60 cc		
Oil bowl capacity		25 cc		90 cc		
Recommended lubricant		ISO VG 32 or Equivalent				
Weight		0.7 KG			0.9 KG	
Material	Body	Aluminum die-cast				
	Bowl	PC IR2200				
	Bowl guard	-			Nylon,Iron	
Component	Filter	AF1500	AF2000	BF2000	BF3000	BF4000
	Regulator	AR1500	AR2000	BR2000	BR3000	BR4000
	Lubricator	AL1500	AL2000	BL2000	BL3000	BL4000